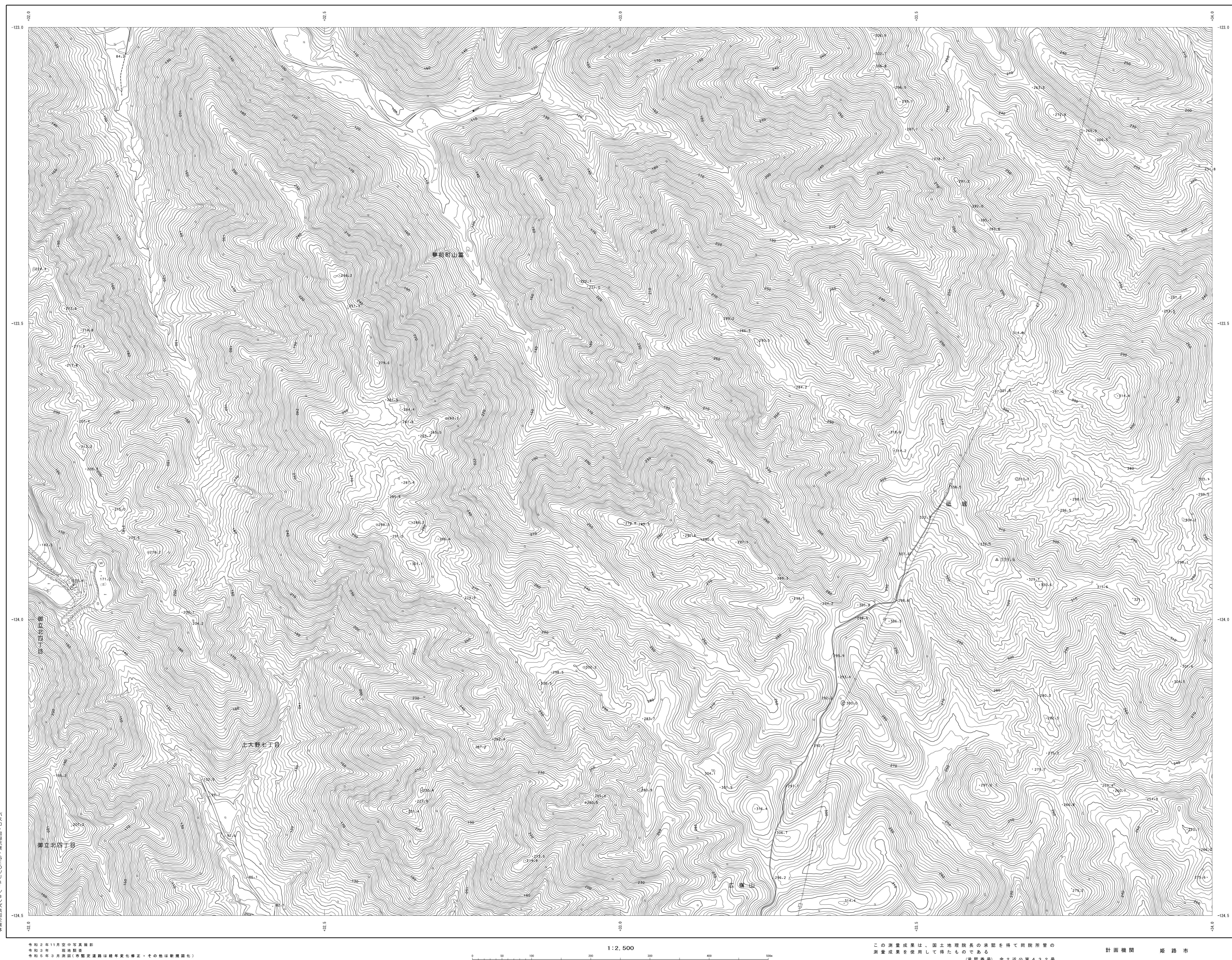









1:2,500 姫路市基本地形図  
V-OE 181



V-OE 181

OE074	OE083	OE084
OE172	OE181	OE182
OE174	OE183	OE184

記 号

	普通建物	25.62	公共点
	壁より建物	42.3	公共点
	壁より建物	35.6	公共点
	壁より建物	25.73	公共点
	普通無壁倉	25.62	電子基準点
	壁より無壁倉	12.3	電子基準点
	壁より無壁倉	15.8	電子基準点

[illegible]

Figure 1 displays symbols for various types of roads and railways, categorized into two main groups: Roads (道路) and Railways (鉄道).

**Roads (道路):**

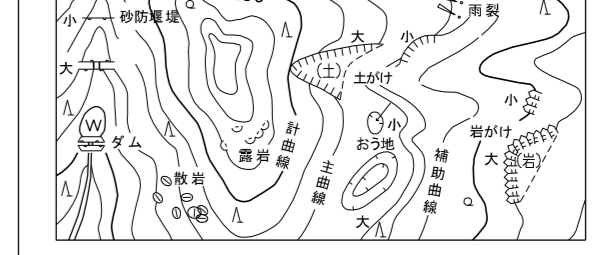
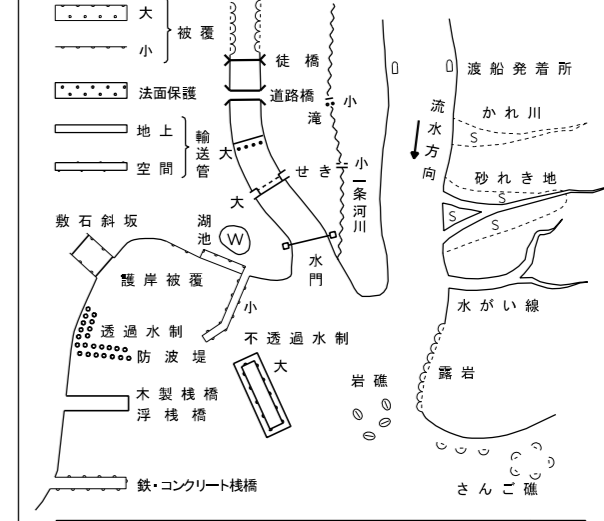
- 真似道路 (Imitation Road): Symbol showing a dashed line with a center line.
- 歩道 (Footpath): Symbol showing a solid line with a dashed center line.
- 国道等 (National Road, etc.): Symbol showing a solid line with a dashed center line and a small circle.
- 建設中の道路 (Road under construction): Symbol showing a solid line with a dashed center line and a small circle.
- 歩道・分岐等 (Footpath, etc.): Symbol showing a solid line with a dashed center line and a small circle.
- 整備歩道 (Improved Footpath): Symbol showing a solid line with a dashed center line and a small circle.
- 道路の管見等 (Road management, etc.): Symbol showing a solid line with a dashed center line and a small circle.

**Railways (鉄道):**

- 水 (Water): Symbol showing a solid line with a dashed center line and a small circle.
- 人工渠 (Artificial Channel): Symbol showing a solid line with a dashed center line and a small circle.
- 土曜等 (Saturday, etc.): Symbol showing a solid line with a dashed center line and a small circle.
- 普通道路 (General Road): Symbol showing a solid line with a dashed center line.
- 歩道 (Footpath): Symbol showing a solid line with a dashed center line.
- 高速 (Expressway): Symbol showing a solid line with a dashed center line and a small circle.
- 建設中の鉄道 (Railroad under construction): Symbol showing a solid line with a dashed center line and a small circle.
- プラットホーム及び踏切 (Platform and crossing): Symbol showing a solid line with a dashed center line and a small circle.
- 踏道 (Footpath): Symbol showing a solid line with a dashed center line.
- 踏道の管見等 (Footpath management, etc.): Symbol showing a solid line with a dashed center line and a small circle.
- 路面電車及び停留所 (Tram and stop): Symbol showing a solid line with a dashed center line and a small circle.
- 電線 (Power line): Symbol showing a solid line with a dashed center line and a small circle.
- 民権 (Civil rights): Symbol showing a solid line with a dashed center line and a small circle.

----- 郡 市 ----- 町 村 -----  
 ----- 東京市の区界 ----- 指定都市の区界 -----  
 ..... 緑 産 園 ..... 緑 産 園 .....

日	日	山	山	高地
▽	▽	その地の密林	△	はい牧場
▽	▽	芝地	△	しの地(傍牧)
◇	◇	森林	T	やし和耕
▽	▽	針葉林	(点線図)	聖地
△	△	竹		



座標系は平成14年国土交通省告示第9号の規定による第Ⅴ座標系  
投影は横メルカトル国造  
関別に表示してある座標値はキロメートル単位  
方角は0、5キロメートル間隔  
高さの基準は東京湾の平均海面  
等高線の間隔は2メートル  
平面直角座標値は、世界測地系に対応

V-OE 181